



Installing MacBook Pro 15" Retina Display Mid 2012 Display Assembly

Written By: Jake Devincenzi

TOOLS:

- [MacBook Pro and Air 5-Point Pentalobe Screwdriver \(1\)](#)
- [Spudger \(1\)](#)
- [T5 Torx Screwdriver \(1\)](#)
- [T8 Torx Screwdriver \(1\)](#)

PARTS:

- [MacBook Pro 15" Retina Display Assembly \(1\)](#)

SUMMARY

Did your display assembly have an unfortunate encounter with a hard surface? Use this guide to replace it.

Step 1 — Lower Case



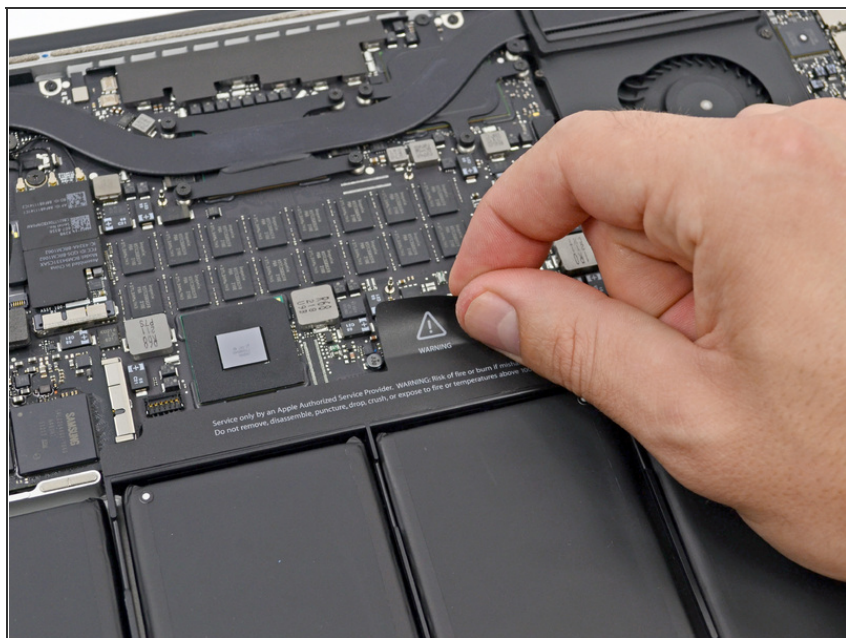
- Remove the following pentalobe screws securing the lower case to the MacBook Pro with Retina display.
 - Eight 3.0 mm
 - Two 2.3 mm

Step 2



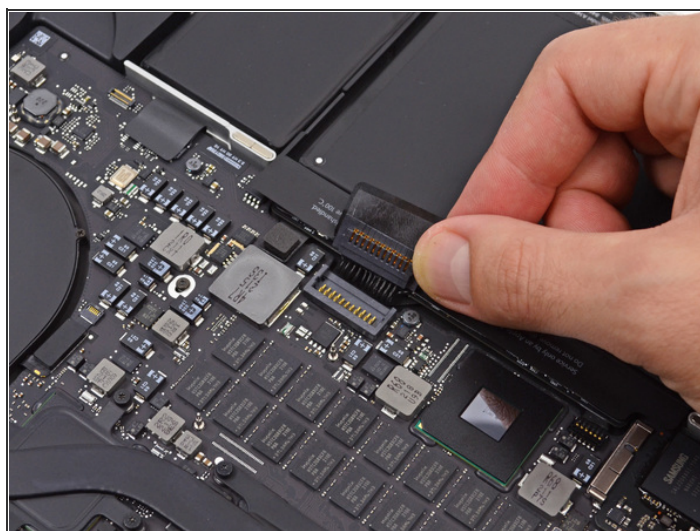
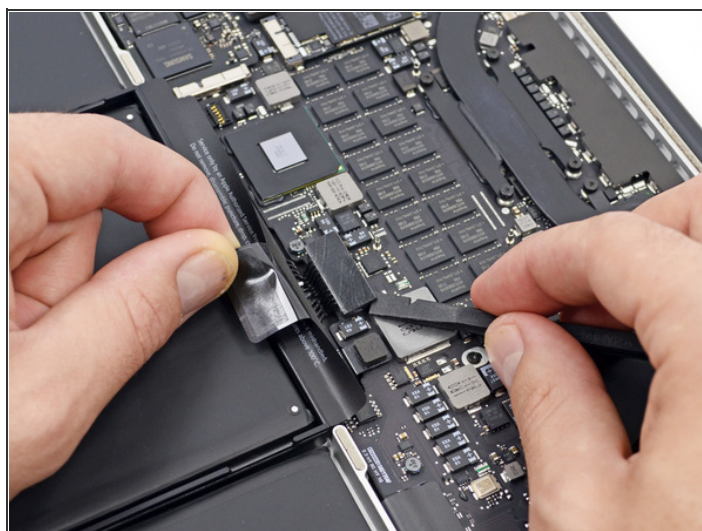
- Lifting from the edge nearest the clutch cover, lift the lower case off the MacBook Pro.
- Set the lower case aside.

Step 3 — Battery Connector



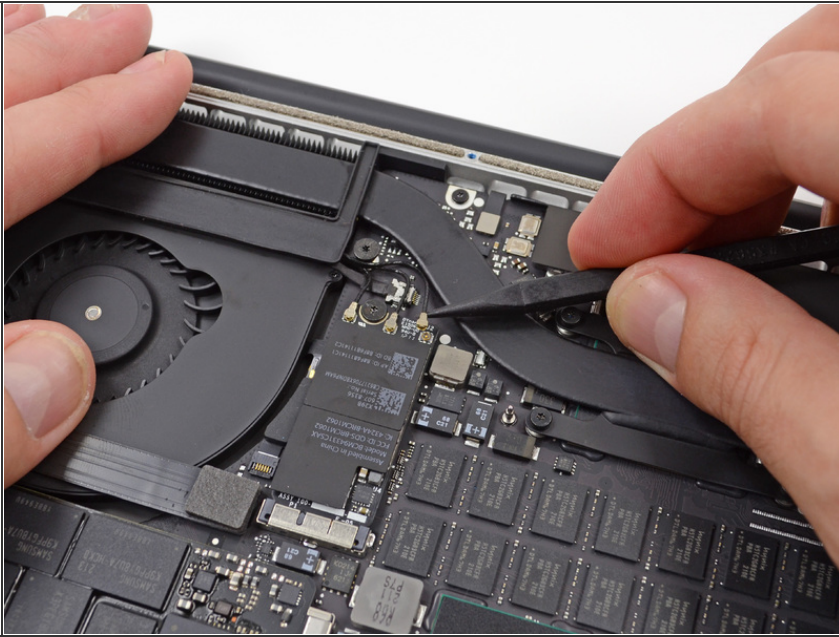
- Peel back the warning label covering the battery connector.

Step 4



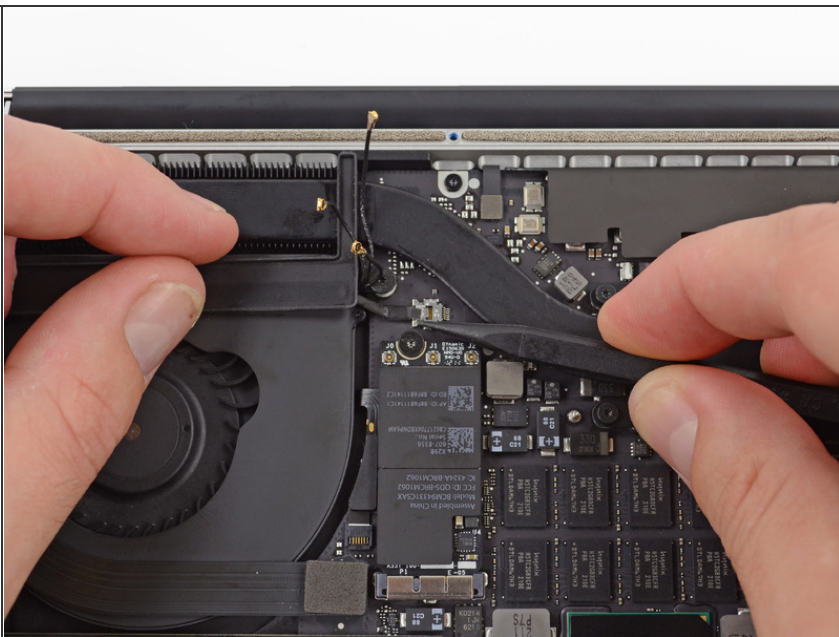
- Using the flat end of a spudger, gently pry the battery connector straight up out of its socket on the logic board.
- Bend the battery cables back and out of the way, ensuring that the battery connector doesn't accidentally make contact with the logic board.


Step 5 — AirPort/Camera Cable



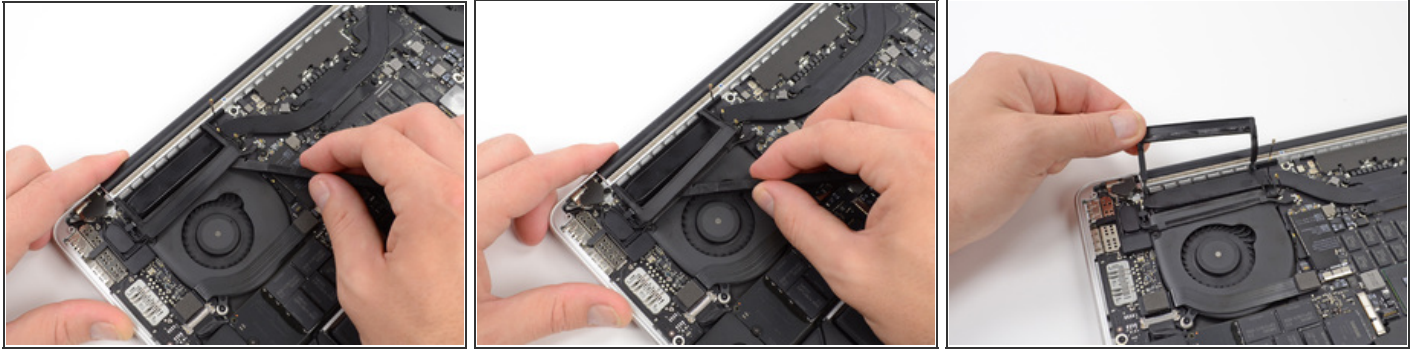
- Use the tip of a spudger to pry the three AirPort antenna cables straight up off of their sockets on the AirPort board.

Step 6



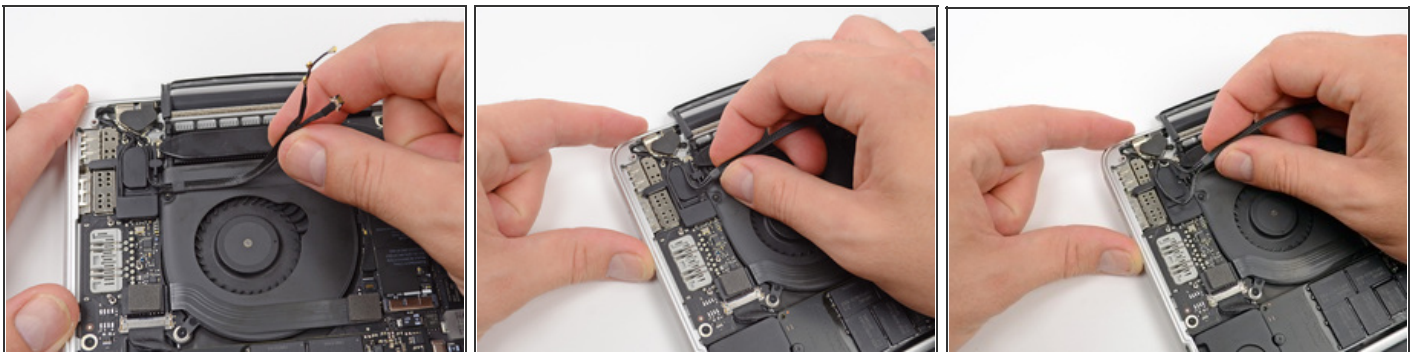
- Use the tip of a spudger to push the camera cable connector out of its socket on the logic board.
- Be sure to push parallel to the board, pushing first on one side, then the other to "walk" the connector out of its socket. 

Step 7



- Insert the flat end of a spudger underneath the rubber heat sink cover on the right fan.
- Slide the spudger underneath the length of the cover, releasing the adhesive.
- Lift the cover and flip it back so that you can access the cables underneath.

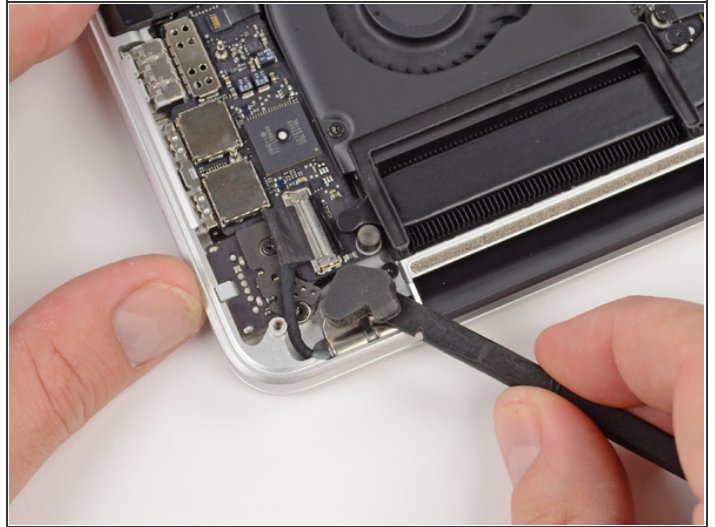
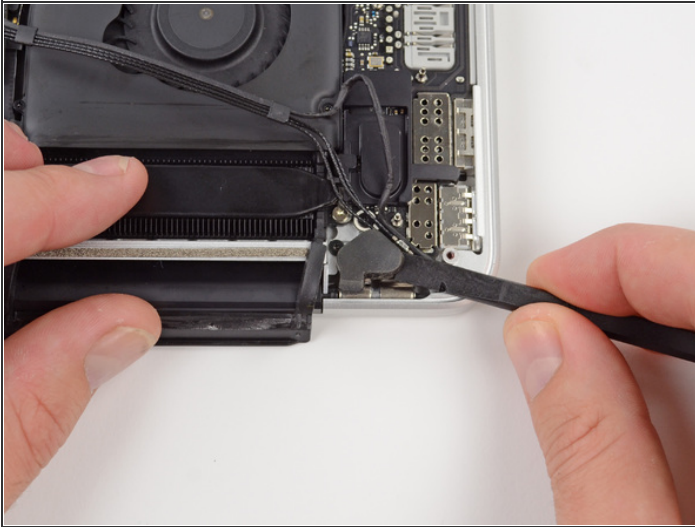
Step 8



- Use your fingers to pull the AirPort/Camera cables up off the fan.
 - The cables are adhered to the fan, so peel them up carefully to prevent ripping any.
- Carefully de-route the cables from the plastic cable guide.

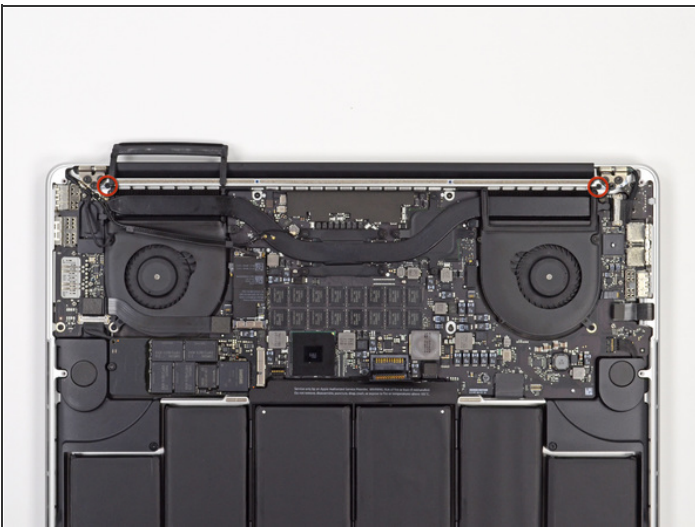


Step 9 — Display Assembly



- Use the flat end of a spudger to pry off the two rubber hinge covers, one from each end of the device.

Step 10



- Remove the two 3.1 mm T5 Torx screws securing the aluminum hinge covers to the upper case.
- Remove the two aluminum hinge brackets from the MacBook Pro.

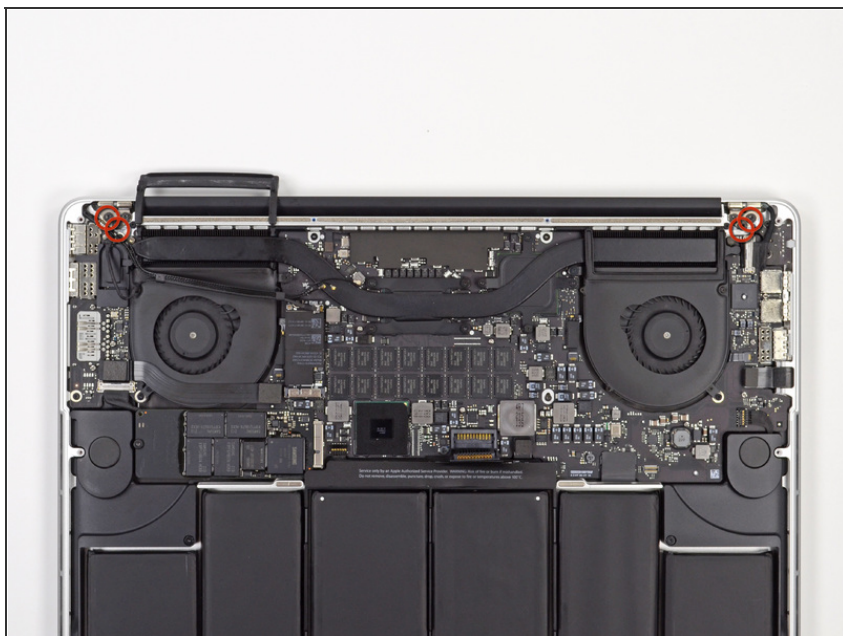
Step 11



- Use the tip of a spudger to pry the display data cable lock and rotate it toward the DC-In side of the computer.
- Pull the display data cable straight out of its socket on the logic board.
- Do not lift up on the display data cable, as its socket is very fragile. Pull the cable parallel to the face of the logic board.



Step 12



- Remove four out of the six 5.3 mm T8 Torx screws securing the display to the upper case.
- We purposely have you leave one screw attaching the display to the upper case to aid in future steps.




Step 13



- Open the MacBook Pro approximately 110 degrees, and place it sideways on the table, as shown.
- While holding the display and upper case together with your left hand, remove the remaining T8 Torx screw from the upper display bracket.

Step 14



- Be sure to hold the display and upper case together with your left hand. Failure to do so may cause the freed display/upper case to fall, potentially damaging each component. 
- Remove the last remaining T8 Torx screw securing the display to the upper case.

Step 15



- Grip both halves of the device, one in each hand.
- Gently push forward on the bottom half of the device to detach it from the display assembly.
- Carefully set each component aside, making sure to set down the lower half keyboard-side down.

To reassemble your device, follow these instructions in reverse order.

This document was last generated on 2012-11-01 08:37:27 AM.